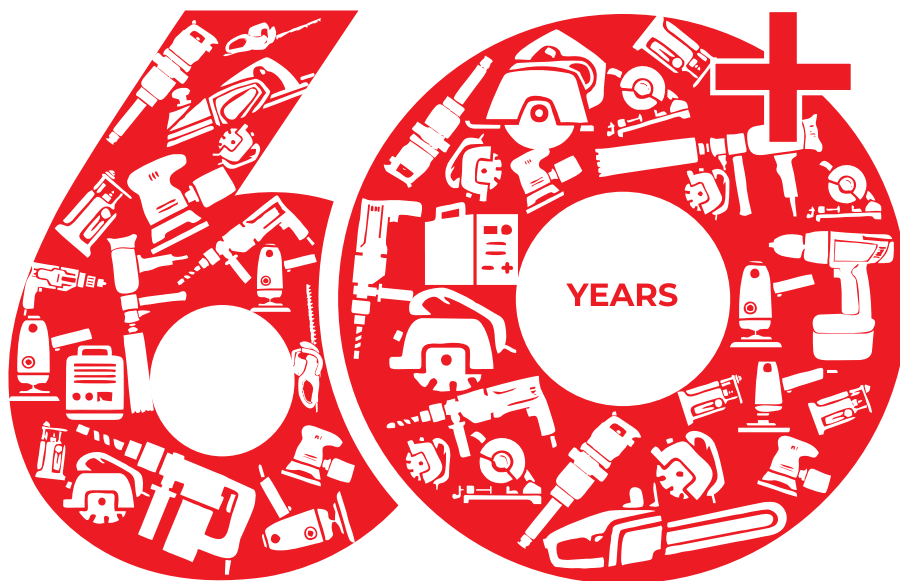




**Ralli Wolf®**



**SERVICE TO THE NATION**

Power Tools | Welding Equipment | Air Tools | Motors | Farm Equipment

[www.ralliwolf.com](http://www.ralliwolf.com)



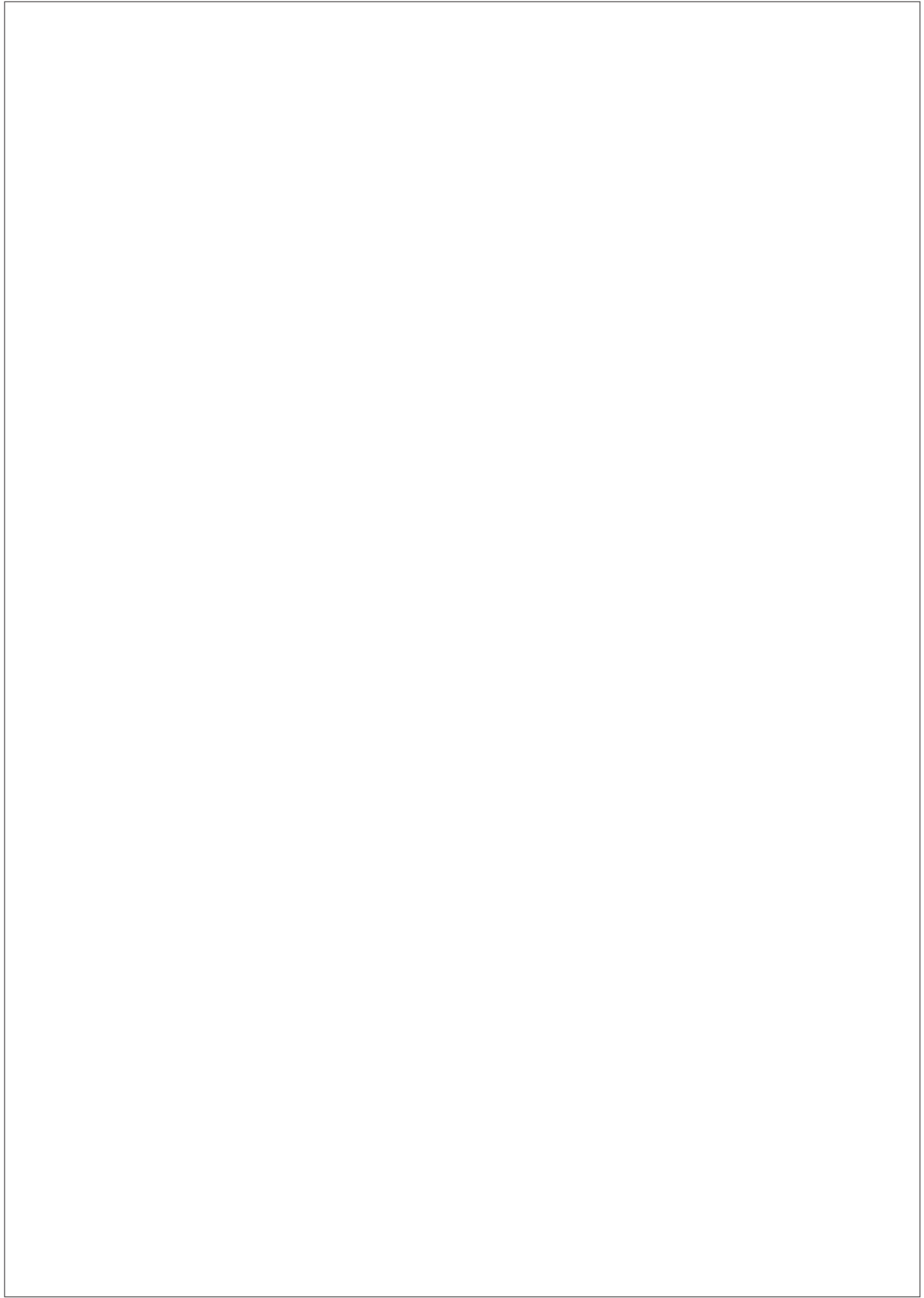
# Ralli Wolf®



## SERVICE TO THE NATION

Power Tools | Welding Equipment | Air Tools | Motors | Farm Equipment

[www.raliwolf.com](http://www.raliwolf.com)



## About Ralliwolf

Ralliwolf being the pioneer of Power tools manufacturing in India, started the journey 60 years ago in collaboration with Wolf UK. Today, after more than six decades, Ralliwolf continues its unwavering commitment to provide comprehensive solutions to its customers across various segments, including power tools, welding equipment, air tools, motors, and farm equipment.

The manufacturing takes place in a state-of-the-art factory located in Ahmednagar, Pune, equipped with sophisticated technology and a highly experienced engineering team.

The company's primary focus is on excelling through innovation, design, technology, and implementation. Ralliwolf boasts a pan-India presence and is represented through 22 locations by its dedicated sales and service team.



## 12V CORDLESS DRIVER DRILL



- Electronic Cell protection for longer life
- Fast charging adaptor with more safety
- Soft grip for easy handling
- LED light for easy working
- Power indicator

**Model RCD12V**

Max. Voltage	12V
Battery Capacity	1500Mah
Drill in Steel / Wood	10mm / 15mm
No Load Speed	0-400 / 0-1450 r/min
Max. Torque	25Nm
Approx Weight	0.8kg.

## 21V CORDLESS DRIVER DRILL

## FREE ACCESSORIES :

- 3 pcs Wood Drill
- 3 pcs Steel Drill
- 1 pc Extend Rod
- 10 pcs Drill Bit
- 1 Connector Rod
- Additional Battery and Adaptor



- Electronic Cell protection for longer life
- Fast charging adaptor with more safety
- Soft grip for easy handling
- LED light for easy working
- Power indicator

**Model RCD21V**

Max. Voltage	21V
Battery Capacity	1500Mah
Drill in Steel / Wood	10mm / 15mm
No Load Speed	0-400 / 0-1450 r/min
Max. Torque	30Nm
Approx Weight	1.1kg.

## 21V CORDLESS IMPACT WRENCH



- Impact Socket
- Trigger Switch
- Forward/Reverse Selector
- Release Button (optional)
- Battery Pack (optional)
- Charger (optional)

**Model RIW21V**

Max. Voltage	21V
Application Bolt Dia.	upto M20
No Load Speed	2060 rpm
Max. Torque	380Nm
Battery Capacity	4000mAh
Approx Weight	1.62 kg. with battery

## BRUSHLESS ANGLE GRINDER



- Maintenance Free & High Efficiency Brushless Motor
- Dual LEDs
- 3 Position Side Handle
- Small Grip Circumference
- Variable Speed Control with Auto Mode
- Easy to Maintain Mesh Dust Filter

**Model RCG100**

Rated Voltage	21V
Motor	48/35 high performing brushless motor
No Load Speed	5000-9000 rpm
Grinding Wheel Diameter	100mm with digital display of speed, with slow start function

## CORDLESS VACUUM CLEANER



- Suitable for complex surfaces such as keyboards
- Suitable for centralized cleaning of small particles
- Low noise

**Model RVCV-12V**

Voltage	11.1V
Built in battery type	Li ion
Battery capacity	2000mAh x 3 pcs
Suction power	7-8 kPa
High speed	13-15Mins
Dust cup capacity	0.45L

## LI-ION CAR 4 IN1 AIR COMPRESSOR



- USB Type -
- Use Car, Bicycle, Motorcycle Ball

**Model RCAI-150**

Voltage	11.1V
Battery capacity	1800mAh x 3 pcs
Cylinder Dia	19mm
Air Flow	20L/min
Max Pressure	150PSI
Led Light	SOS, LED
Inflate Time	about 7min (195 55/R15)
Product Size	68x5x16cm

## COMPACT DRILL 10mm



- Compact & Light Weight
- Variable Speed & reversible for multifunctionality

**Model 12110**

Watts Input (Full Load)	550 Watts
No Load Speed	0-2500 r.p.m.
Approx Net Weight	1.9 kg.

## PLAIN DRILL 10mm



- Variable & Reversible Switch

**Model RD10**

Watts Input (Full Load)	500 Watts
No Load Speed	0-2800 r.p.m.
Approx Net Weight	1.3 kg.

### ROTARY DRILL 10mm



- Sturdy aluminium casting gear box construction
- Light weight, with adjustable side handle for comfort
- Powerful Motor
- Can be used as skirting polisher (with attachments)

235V



Model	RW10
Watts Input (Full Load)	650 Watts
No Load Speed	1250 r.p.m.
Approx Net Weight	1.7 kg.(supply without chuck)

### SCREW DRIVER DRILL 10mm



- Ergonomic soft grip design
- Quick change carbon brush system
- Keyless chuck for bits quick change
- 20+1 Torque Setting for drilling different material
- LED working light

230V 50HZ



Model	RWSD10
Rated Power	400W
No loading speed	0-750r/min
Full Load Current	1.7Amps.
Approx. Weight	1.3kg

### IMPACT DRILL 13mm



- Sturdy aluminium casting gear box construction
- Light weight, with adjustable side handle for comfort
- Powerful Motor
- Can be used as masonry & rotary drill

235V-50HZ



Model	RW13
Watts Input (Full Load)	650 Watts
No Load Speed	1800 r.p.m.
Approx Net Weight	2 kg.

Also suitable for skirt polisher.

### PROFESSIONAL IMPACT DRILL KIT 13mm



Carry Case with :  
1pc 500W Impact Drill, 1pc Side Handle, 2pcs Screwdriver, 1pc Tester, 1pc Utility knife, 1pc Combination Plier, 1pc Measuring Tape 3M, 3pcs Masonry Drill of size 5/6/8mm, 3pcs HSS Drill of size 4.5/5.5/6.5, 6pcs Screwdriver Bits, 1pc Magnetic Bit Holder, 1pc AS Handle, 1pc Hammer, 1pc Adjustable Wrench, Reveal Plugs & Screws.

Model	RDK13
Switch	Variable & Reversible
No Load Speed	0-3000 r.p.m.
Impact Rated	0-48000 BPM
Approx Net Weight	4 kg.



### IMPACT DRILL 13mm



- Compact & Light Weight with soft grip
- Variable Speed & reversible for multifunctionality
- Can be used as masonry & rotary drill

235V



Model	16130	18130
Watts Input (Full Load)	550 Watts	700 Watts
No Load Speed	0-2650 r.p.m.	0-2800 r.p.m.
Approx Net Weight	1.9 kg.	1.7 kg.

### PROFESSIONAL IMPACT WRENCH 30mm



- 100% copper motor with high efficient power
- High torque, lower energy consumption
- Aluminum head, sturdy and durable
- Good heat dissipation system
- Quick change carbon brush system

235V

Model	RW300-I
Voltage	230V 50HZ
Rated Power	450W
No load speed	2600 RPM
Torque	300N.m
Square connector	1/2"
Full Load Current	2Amps.
Approx. Weight	3.3kg
Insulation	Double insulated



### DIE GRINDER 6mm



- Long neck straight grinder for die grinding and finishing of intricate parts in light engineering works

235V / 115V



Model	RDG25
Watts Input (Full Load)	420 Watts
No Load Speed	25000 r.p.m.
Approx Net Weight	1.8 kg.

### DIE GRINDER 6mm



- Short neck straight grinder for die grinding

235V



Model	RDG600
Watts Input (Full Load)	550 Watts
No Load Speed	27000 r.p.m.
Approx Net Weight	1.8 kg.



LIGHT DUTY  
ANGLE GRINDER

100mm



- For light weld dressing works during fabrication

235V



## Model

25100

Capacity  $\phi 100 \times \phi 16 \times 5.5 \text{ mm}$ 

Watts Input (Full Load) 650 Watts

No Load Speed 11000 r.p.m.

Approx Net Weight 1.6 kg.

## ANGLE GRINDER

100mm



- With Back Toggle Switch design for wall chasing.
- For weld dressing in light engineering industries

235V



## Model

RG8-100

Capacity  $\phi 100 \times \phi 16 \times 6 \text{ mm}$ 

Watts Input (Full Load) 850 Watts

No Load Speed 10500 r.p.m.

Approx Net Weight 1.7 kg.

## ANGLE GRINDER

100mm



- Suitable for light weld dressing work in sheet metal fabrication.

235V 50Hz



## Model

RF9-100

Capacity  $\phi 100 \times \phi 16 \times 5 \text{ mm}$ 

Watts Input (Full Load) 900 Watts

No Load Speed 11000 r.p.m.

Approx Net Weight 1.7 kg.

## ANGLE GRINDER

100mm



- Suitable for light weld dressing work in sheet metal fabrication.

235V 50Hz



## Model

RWG610E

Capacity  $\phi 100 \times \phi 16 \times 5.5 \text{ mm}$ 

Watts Input (Full Load) 750 Watts

No Load Speed 11000 r.p.m.

Approx Net Weight 1.5 kg.

## ANGLE GRINDER

100mm



- High Powered for welding & cutting application in medium scale fabrication segment.

235V / 115V



## Model

AG100

Capacity  $\phi 100 \times \phi 16 \times 6 \text{ mm}$ 

Watts Input (Full Load) 1020 Watts

No Load Speed 10500 r.p.m.

Approx Net Weight 2 kg.

INDUSTRIAL  
ANGLE GRINDER

100mm



- Enhanced durability with auto cut carbon brush
- Anti vibration side handle
- For continuous weld dressing & cutting in heavy fabrication segment.

235V



## Model

45100

45125H

Capacity  $\phi 100 \times \phi 16 \times 5 \text{ mm}$  $\phi 125 \times \phi 22.23 \times 6 \text{ mm}$ 

Watts Input (Full Load) 850 Watts

850 Watts

No Load Speed 11000 r.p.m.

11000 r.p.m.

Approx Net Weight 1.7 kg.

1.8 kg.

## ANGLE GRINDER

125mm



- High Powered for welding & cutting application in medium scale fabrication segment.

235V / 115V



## Model

AG125

Capacity  $\phi 125 \times \phi 22.2 \times 6 \text{ mm}$ 

Watts Input (Full Load) 1020 Watts

Spindle Thread: M14

No Load Speed 10500 r.p.m.

Approx Net Weight 2 kg.

## ANGLE GRINDER

125mm



- One hand operation design
- 100% copper motor
- Motor with dust protection
- Electronic Overload protection
- Restart Protection
- Soft Start feature
- 6 speed regulation

230V 50HZ



## Model

60145

Rated Power 1400W

No loading speed 3000-11000r/min

Spindle Thread: M14

Full Load Current 7.6Amps.

Approx. Weight 2.8kg

**ANGLE GRINDER 125mm**


- Ergonomically designed.
- End & side handle provides comfort while operation.
- Suitable for continuous grinding in steel fabrication.

235V / 115V



Model	35135	55145
Capacity	ø125xø22x5.5mm	ø125xø22x5.5mm
Watts Input (Full Load)	1350 Watts	1400 Watts
No Load Speed	9000 r.p.m.	10000 r.p.m.
Approx Net Weight	3.1 kg.	3.2 kg.

**ANGLE GRINDER 180mm**


- Ergonomically designed.
- Powerful motor maintains the required load speed.
- For continuous weld dressing in heavy structural fabrication works.

235V



Model	22180	24180
Capacity	ø180xø22x5.5mm	ø180xø22x5.5mm
Watts Input (Full Load)	2200 Watts	2400 Watts
No Load Speed	8500 r.p.m.	8500 r.p.m.
Approx Net Weight	4.62 kg.	5.91 kg.

**HEAVY DUTY ANGLE GRINDER 180mm / 230mm**


- Sturdy metal body construction
- Powerful motor maintains the required load speed.
- For continuous fettling & weld dressing works.

235V



Model	77180	77230
Capacity	ø180xø22x5.5mm	ø230xø22x5.5mm
Watts Input (Full Load)	2500 Watts	2500 Watts
No Load Speed	8200 r.p.m.	6500 r.p.m.
Approx Net Weight	5.4 kg.	5.4 kg.

**HEAVY DUTY ANGLE GRINDER 180mm / 230mm**


- Suitable for continuous grinding in steel fabrication.

235V



Model	AG180	AG230
Capacity	ø180xø22x5.5mm	ø230xø22x5.5mm
Watts Input (Full Load)	2400 Watts	2400 Watts
No Load Speed	8500 r.p.m.	6800 r.p.m.
Approx Net Weight	5.1 kg.	5.1 kg.

**INDUSTRIAL ANGLE GRINDER 180mm**


- Enhanced durability with auto cut carbon brush
- Anti vibration side handle
- For continuous weld dressing & cutting in heavy fabrication segment.

235V



Model	55180
Capacity	ø180xø22x5.5mm
Watts Input (Full Load)	2200 Watts
No Load Speed	8400 r.p.m.
Approx Net Weight	5.1 kg.

**HEAVY DUTY ANGLE GRINDER ø180xø22x5.5mm / ø230xø22x5.5 mm**


- Sturdy metal body construction
- Powerful motor maintains the required load speed.
- For continuous fettling & weld dressing works.

235V

Model	77180M	77230M
Capacity	ø180xø22x5.5mm	ø230xø22x5.5mm
Watts Input (Full Load)	2500 Watts	2500 Watts
No Load Speed	8000 r.p.m.	6500 r.p.m.
Approx Net Weight	5.9 kg.	5.9 kg.

**PROFESSIONAL ROTARY HAMMER 22mm**


235V AC



Model	RW22H
Power Input	650 Watts
Full load impact rate	0-3900 BPM
Impact Energy	1.5J
No Load Speed (r.p.m.)	0-850 RPM
Approx Net Weight	2.7 kg.

**PROFESSIONAL ROTARY HAMMER 26MM**


- 100% copper motor with high efficient power • Strong impact
- Safety clutch to protect user and machine • Lubricated by sealed-grease
- Forward & Reverse functions

235V AC



Model	RW22-3M
Power Input	800 Watts
Full load impact rate	0-4400 BPM
No Load Speed (r.p.m.)	0-1400RPM
Impact Energy	2.2J
Approx Net Weight	2.5 kg.



**PROFESSIONAL  
ROTARY HAMMER** 26mm , SDS Plus


235V AC



Model	RW26H
Power Input	800 Watts
Full load impact rate	0-4900 BPM
Impact Energy	1.5J
No Load Speed (r.p.m.)	0-1100 RPM
Approx Net Weight	3.1 kg.

**DEMOLITION  
HAMMER** 5KG


235V AC

Model	RW5EH
Power Input	1200 Watts
Full load impact rate	1400 BPM
No Load Speed (r.p.m.)	4100 / min-1
Impact Energy	10J
Approx Net Weight	6.07 kg.

**DEMOLITION  
HAMMER** 11KG


235V AC



Model	RW11EH	RW26H
Power Input	1500 Watts	800 Watts
Full load impact rate	1300 BPM	0-4900 BPM
No Load Speed (r.p.m.)	120-250 / min	3J
Impact Energy	6-25J	0-1100 /min
Approx Net Weight	10.1 kg.	3.1 kg.

**DEMOLITION  
HAMMER** 15KG


235V AC

Model	RW15H
Rated Output Capacity	1500 Watts
Impact Frequency	1850 BPM
Impact Force	45 J
Full Load Current	6.38A
Weight	15 kg

**CONCRETE  
VIBRATOR** 35mm


- Ergonomic grip design
- Accompany with 1.5m \*dia. 35mm vibration rod.
- Long-life output shaft

230V



Model	RWCV35
Rated Power	850W
No loading speed	4000 r.p.m.
Vibration Rod length	1.5M
Full Load Current	3.7 Amps
Approx. Weight	2kg.

**CONCRETE  
VIBRATOR** 35mm


- 100% copper powerful motor ensure up to 4400RPM rotating speed.
- Ergonomic soft grip design
- Accompany with 3.0m long 35mm dia.
- High efficient vibration rod.
- Long -life output shaft

230V



Model	RWCV35-3
Rated Power	1100W
No loading speed	4400r/min
Vibration Rod length	3M
Full Load Current	5Amps.
Approx. Weight	2.4kg

**ELECTRIC  
MIXER** 160mm


- Powerful motor ensure up to 1000 r.p.m. rotating speed.
- Quick change carbon brush system.
- High efficient mixing wheel design.
- Rear D handle design ensure the operation stability.

230V 50HZ



Model	RPM16
Rated Power	1000W
No loading speed	1000r/min
Spindle size	M12
Full Load Current	4.5Amps.
Approx. Weight	3.5kg

**DIAMOND CORE DRILL**


Model	RDD110	RDD200
Voltage	230V	230V
Power Input	2080W	3900W
No load speed	2100 rpm	580 rpm
Drill Range	ø12-110mm	205mm

**CHOP SAW**

**355mm**



- Used for cutting of steel pipes, aluminium sections, in light engineering works.
- Cuts TMT Bars.

235V / 115V



**Model** **RW14E**

Watts Input (Full Load) 2300 Watts

No Load Speed 3900 r.p.m.

Approx Net Weight 17.2 kg.

**CUT-OFF SAW**

**355mm**



- Used for cutting of steel pipes, aluminium sections, in light engineering works.
- Cuts TMT Bars.
- D handle and soft start

235V



**Model** **RC14D**

Watts Input (Full Load) 2600 Watts

No Load Speed 3900 r.p.m.

Approx Net Weight 18 kg.

**MARBLE CUTTER**

**110mm**



- High powered motor
- Marble & granite cutting
- Double insulated

235V AC



**Model** **RW4** **RW110**

Max. Cutting Capacity 34mm -

Watts Input (Full Load) 1050 Watts 1050 Watts

No Load Speed 13000 r.p.m. 14000 r.p.m.

Full Load Current 4.5A

Approx Net Weight 3.2 kg. 3 kg.

**MARBLE CUTTER**

**110mm**



- High powered motor
- Marble & granite cutting
- Double insulated

235V AC



**Model** **WW110**

Max. Cutting Capacity 34mm

Watts Input (Full Load) 1200 Watts

No Load Speed 11000 r.p.m.

Full Load Current 5.2A

Approx Net Weight 2.9 kg.

**MARBLE CUTTER**

**110mm**



- High powered motor
- Marble & granite cutting
- Double insulated

235V



**Model** **RW4-SB**

Watts Input (Full Load) 1050 Watts

No Load Speed 11000 r.p.m.

Approx Net Weight 3 kg.

**MARBLE CUTTER**

**125mm**



- High powered motor
- 0-45° beveling
- Marble and granite cutting
- Double insulated

235V



**Model** **RW125**

Watts Input (Full Load) 1300 Watts

No Load Speed 13000 r.p.m.

Approx Net Weight 2.9 kg.

Options: Fixed / Tilted type base plate

**CIRCULAR SAW**

**185mm / 180mm**



- Woodworking industry
- Teak wood & ply wood cutting
- Double insulated

235V



**Model** **RS180 NEW** **RCS180**

Watts Input (Full Load) 1300 Watts 1400 Watts

No Load Speed 5000 r.p.m. 5800 r.p.m.

Approx Net Weight 4.2 kg. 5.5 kg.

**PLANER**

**2-82mm  
82X2mm**



- 2mm revit cutting
- Planing of wooden surface
- Double insulated

235V



**Model** **RW2-82** **28200**

Watts Input (Full Load) 710 Watts 500 Watts

No Load Speed 15000 r.p.m. 15000 r.p.m.

Approx Net Weight 4 kg. 2.6 kg.

## ROUTER

12mm



- Ergonomic soft grip design
- Powerful copper motor
- Precision depth adjustment
- Quick change carbon brush system
- LED working light

230V 50HZ



Model	RW8-12	RW-RT12
Rated Power	1600 Watts	1800W
No loading speed	23000 r.p.m.	23000r/min
Collet(cutter) Size		8-12mm
Approx Weight	4.3 kg.	4.1kg

## TRIMMER

6mm / 6.35mm



- 100% copper motor with high efficient power
- High quality bearings
- Dust proof switch for long endurance lifetime
- Good heat dissipation system
- With trimming nut on guard, cutting more accurate
- Quick change carbon brush system
- Also useful as small Router

230V 50HZ



Model	RT6
Voltage	230V 50HZ
Rated Power	600W
No load speed	30000 RPM
Mandrel connection	6mm/6.35mm
Full Load Current	2.6Amps.
Approx. Weight	1.9kg

## JIG SAW

60mm



- Ergonomic soft grip design
- Powerful copper motor
- Precision depth adjustment
- Quick change carbon brush system
- LED working light

230V AC 50HZ



Model	RJS60
Rated Input Power	600W
Strokes Length	26mm (1")
Strokes Per Minute	500-3000 spm
Full Load Current	2.55A
Approx Weight	2.5kg

## HEAT GUN

2000W



- 2000W powerful motor
- Heat shrinking purpose
- Two speed switch

235V



Model	RG2100
Full Load Current	8.5 A
Switch Position	1-2
Temperature	1-350°C / 2-550°C
Approx. Weight	0.6 kg.

1600W INDUSTRIAL QUALITY  
HIGH PRESSURE WASHER

130 Bar



- 100% copper motor
- Total stop system
- Quick fitting of hose and gun
- Variable adjustable fan spray lance

235V

Model	RHP130
Motor Type	Induction Motor
Flow rate	390 L/H
Rated Voltage	230V AC
Watt Input (full load)	1600W
Approx Weight	12 kg.



## ELECTRIC BLOWER 3.8m³/min



- Dual function with blowing and suction applications
- Powerful 600 W motor
- Variable speed control with 6 step speed settings provides

235V AC



Model	RB60V	RB500
Air Volume	3.8m³/min	3.8m³/min
Watts Input (Full Load)	600 Watts	600 Watts
No Load Speed	6000-16000 r.p.m	6000-16000 r.p.m.
Approx Net Weight	1.8 kg	1.8 kg.

## ELECTRIC BLOWER 3.8m³/min

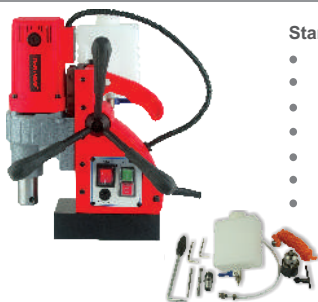


- Light weight single speed
- For general purpose cleaning applications.

235V



Model	RB500 PRO	RB50-S
Air Volume	3.8m³/min	3.2m³/min
Watts Input (Full Load)	600 Watts	530 Watts
No Load Speed	16000 r.p.m.	15000 r.p.m.
Approx Net Weight	1.6 kg.	1.8 kg.

**YUVA38**
**38mm x 50mm**

**Standard Accessories**

- Coolant bottle
- Metal Chips Pick Up
- Allen Key - 2 No
- Work Locating Fix Pin
- 13mm Drill Chuck with Key
- Safety Rope
- Chuck Adaptor

Voltage	230 V
Watts Input (Full load)	1300 W
No load RPM	700 RPM
Variable/Reversible	Single Speed
Magnetic Adhesion	1226.7 Kgf
Magnetic Adhesion	12000 N
Max Core Drilling Capacity	38x50 MM
Adaptor Size	Self 19.05 MM
Twist Drill Capacity	13 MM
Weight (without accessories)	10.5 Kg.

**ENOVA-40**
**40mm x 50mm**

**Standard Accessories**

- Coolant bottle - 1 No
- Allen Key - 1 No
- Safety chain - 1 No.
- Side arm- 3 nos.

Voltage	235 V
Watts Input (Full load)	1200 W
Full load Amps.	6.0 A
No load RPM	400 RPM
Variable/Reversible	Single Speed
Magnetic Adhesion	1100 Kgf
Magnetic Adhesion	10787 N
Max Core Drilling Capacity	40x50MM
Adaptor Size	Self 19.05mm
Stroke	97 MM
Magnet size (LxWxH)	165x80x45MM
Weight (without accessories)	13.2 Kg.

**NW50S**
**50mm x 50mm**

**Standard Accessories**

- Side arm -3 no
- Coolant bottle-1no
- Safety chain-1no
- Adaptor MT3-1no
- Spanner 10\*13-1no
- Bracket-1no
- Tubuler Handle-1no
- Screws & Washer- 4no.
- Allen Key-1no
- Drift-1no

Voltage	235 V
Watts Input( Full load)	1600 W
Full load Amps.	8.0 A
No load RPM	450 RPM
Variable/Reversible	Single Speed
Magnetic Adhesion	1500 Kgf
Magnetic Adhesion	14709 N
Max Core Drilling Capacity	50x50MM
Adaptor Size	MT3
Twist Drill Capacity	20MM
Stroke	125 MM
Magnet size (LxWxH)	200x100x85MM
Weight (without accessories)	31 Kg.

**COMMANDO40S**
**40mm x 50mm**

**Standard Accessories**

- Allen Key - 2no.
- Coolant bottle
- Safety Belt
- Drift-1no
- 13mm Drill Chuck with Key
- Drill Chuck Holder

Voltage	230V
Watts Input (Full load)	1100 W
No load RPM	270 to 610 RPM
Variable/Reversible	Variable
Speed selection	6 speed
Magnetic Adhesion	815.7 Kgf
Magnetic Adhesion	8000 N
Max Core Drilling Capacity	40x50 MM
Adaptor Size	Self 19.05MM
Twist Drill Capacity	13MM
Stroke	85MM
Magnet size (LxWxH)	165x80x45MM
Weight (without accessories)	13.7Kg.

**MEGA45**
**45mm x 50mm**

**Standard Accessories**

- Side arm -3 no.
- Allen Key - 2no.
- Coolant bottle-1no.
- Safety Belt-1no.
- Drift-1no.
- 13mm chuck with Key
- Drill Chuck Arbour MT-2 B16 -1no.
- MT-2 (19.05MM) Adeptor
- "For Core Drilling"-1no.
- Pilot Pin-1no.
- Fuse - 2 no.

Voltage	235V
Watts input (Full load)	1380W
No load RPM	100 to 470 RPM
Variable/Reversible	Variable/Reversible
Speed selection	Variable
Magnetic Adhesion	1682.5 Kgf
Magnetic Adhesion	16500 N
Max Core Drilling Capacity	45x50MM
Adaptor Size	MT2
Twist Drill Capacity	19MM
Tapping capacity	M3 to M12
Stroke	210 MM
Magnet size (LxWxH)	202x102x45MM
Weight (without accessories)	17 Kg.

**COMMANDO50**
**50mm x 50mm**

**Standard Accessories**

- Side arm -3 no.
- Coolant bottle-1no.
- Safety Belt-1no.
- Drift-1no.
- 13mm chuck with Key-1no.
- MT-2 (19.05MM) Adeptor
- "For Core Drilling" -1no.
- Spare C/B set-1 pair
- Eye bolt -2 no.
- Safety Goggle-1no.
- Adaptor MT2-1no.
- Allen Key - 2no.

Voltage	230 V
Watts Input ( Full load)	1500 W
No load RPM	100 to 265 RPM, 200 to 500 RPM
Variable/Reversible	Variable/Reversible
Speed selection	6 speed
Magnetic Adhesion	1376.6 Kgf
Magnetic Adhesion	13500 N
Adaptor Size	MT2
Twist Drill Capacity	23MM
Tapping capacity	M20
Stroke	166 MM
Magnet size (LxWxH)	200x98x40MM
Weight (without accessories)	15.8 Kg.



## COMMANDO 50LP

50mm x 50mm



## Standard Accessories

- Allen Key-1no
- Coolant bottle-1no
- Ratchet Handle-1no
- Safety Belt-1no
- Safety Goggle-1no
- Spare C/B set-1 pair

Voltage	230 V
Watts Input (Full load)	1200 W
No load RPM	250 to 500 RPM
Variable/Reversible	Variable
Speed selection	6 Speed
Magnetic Adhesion	1376.6 Kgf
Magnetic Adhesion	10000 N
Max Core Drilling Capacity	50x50MM
Adaptor Size	Self 19.05mm
Magnet size (LxWxH)	192x82MM
Weight (without accessories)	11 Kg.

## COMMANDO 75

75mm x 75mm



## Standard Accessories

- Side arm -3 no.
- Allen Key - 2no.
- Coolant bottle-1no.
- Safety Belt-1no.
- Drift-1no.
- 16mm chuck with Key-1no.
- Drill Chuck Arbour MT-3 B16 -1no.
- Eye bolt -2 no.
- Safety goggle-1no.
- Pilot Pin-1no.
- MT-3 (19.05MM) Adeptor
- "For Core Drilling" -1no.
- MT-3 (31.75MM) Adeptor
- "For Core Drilling"-1no

Voltage	230 V
Watts Input (Full load)	1800 W
Full load Amps.	8.6 A
No load RPM	70 to 180 RPM, 200 to 500 RPM
Variable/Reversible	Variable/Reversible
Speed selection	2 speed
Magnetic Adhesion	1886.5 Kgf
Magnetic Adhesion	18500 N
Adaptor Size	MT3
Twist Drill Capacity	26MM
Tapping capacity	M24
Stroke	240 MM
Magnet size (LxWxH)	220x114x45MM
Weight (without accessories)	22.8 Kg.

## COMMANDO 100

100mm x 100mm



## Standard Accessories

- Side arm -3 no.
- Allen Key - 2no.
- Coolant bottle-1no.
- Safety Belt-1no.
- Drift-1no.
- 16mm chuck with Key-1no.
- Drill Chuck Arbour MT-3 B16 -1no.
- Eye bolt -2 no.
- Safety goggle-1no.
- Pilot Pin-1no.
- MT-3 (19.05MM) Adeptor
- "For Core Drilling" -1no.
- MT-3 (31.75MM) Adeptor
- "For Core Drilling"-1no

Voltage	230 V
Watts Input (Full load)	2000 W
No load RPM	45 to 129 RPM, 70 to 208 RPM
	150 to 434 RPM, 240 to 700 RPM
Variable/Reversible	Variable/Reversible
Speed selection	4 speed
Magnetic Adhesion	2039.4 Kgf
Magnetic Adhesion	20000 N
Adaptor Size	MT3
Twist Drill Capacity	32MM
Tapping capacity	M30
Stroke (MM)	264 MM
Magnet size (LxWxH)	228x114x50MM
Weight (without accessories)	24.8 Kg.

## MEGA-150

150mm x 150mm



## Standard Accessories

- Side Arm- 3nos.
- Safety belt- 1no.
- M2 Wrench-1no.
- M3 Wrench-1no.
- M4 Wrench-1no.
- Drift-1no.
- Coolant bottle-1no.
- Pilot pin-2nos.
- MT-4 (19.05MM) Adeptor
- "For Core Drilling" -1no
- MT-4 (31.75MM) Adeptor
- "For Core Drilling"-1no

Voltage	230 V
Watts Input (Full load)	3080 W
No load RPM	40 to 100 RPM,
	70 to 180 RPM
	180 to 450 RPM,
	290 to 720 RPM
Variable/Reversible	Variable/Reversible
Speed selection	4 Speed
Magnetic Adhesion	2498.3 Kgf
Magnetic Adhesion	24500 N
Adaptor Size	MT4
Twist Drill Capacity	57MM
Tapping capacity	M50
Stroke	360 MM
Magnet size (LxWxH)	245x125x50MM
Weight (without accessories)	32 Kg.



## TCT Annular Cutter

TCT Annular Cutter with 19.05mm Weldon Shank	
ømm	ømm
12*35/50/75/100	37*35/50/75/100
13*35/50/75/100	38*35/50/75/100
14*35/50/75/100	39*35/50/75/100
15*35/50/75/100	40*35/50/75/100
16*35/50/75/100	41*35/50/75/100
17*35/50/75/100	42*35/50/75/100
18*35/50/75/100	43*35/50/75/100
19*35/50/75/100	44*35/50/75/100
20*35/50/75/100	45*35/50/75/100
21*35/50/75/100	46*35/50/75/100
22*35/50/75/100	47*35/50/75/100
23*35/50/75/100	48*35/50/75/100
24*35/50/75/100	49*35/50/75/100
25*35/50/75/100	50*35/50/75/100
26*35/50/75/100	51*35/50/75/100
27*35/50/75/100	52*35/50/75/100
28*35/50/75/100	53*35/50/75/100
29*35/50/75/100	54*35/50/75/100
30*35/50/75/100	55*35/50/75/100
31*35/50/75/100	56*35/50/75/100
32*35/50/75/100	57*35/50/75/100
33*35/50/75/100	58*35/50/75/100
34*35/50/75/100	59*35/50/75/100
35*35/50/75/100	60*35/50/75/100
36*35/50/75/100	

TCT Annular Cutter with 31.75mm Weldon Shank	
ømm	ømm
61*35/50/75/100	81*35/50/75/100
62*35/50/75/100	82*35/50/75/100
63*35/50/75/100	83*35/50/75/100
64*35/50/75/100	84*35/50/75/100
65*35/50/75/100	85*35/50/75/100
66*35/50/75/100	86*35/50/75/100
67*35/50/75/100	87*35/50/75/100
68*35/50/75/100	88*35/50/75/100
69*35/50/75/100	89*35/50/75/100
70*35/50/75/100	90*35/50/75/100
71*35/50/75/100	91*35/50/75/100
72*35/50/75/100	92*35/50/75/100
73*35/50/75/100	93*35/50/75/100
74*35/50/75/100	94*35/50/75/100
75*35/50/75/100	95*35/50/75/100
76*35/50/75/100	96*35/50/75/100
77*35/50/75/100	97*35/50/75/100
78*35/50/75/100	98*35/50/75/100
79*35/50/75/100	99*35/50/75/100
80*35/50/75/100	100*35/50/75/100

## HSS Annular Cutter

HSS Annular Cutter with 19.05mm Weldon Shank	
ømm	ømm
12*35/50/75/100	37*35/50/75/100
13*35/50/75/100	38*35/50/75/100
14*35/50/75/100	39*35/50/75/100
15*35/50/75/100	40*35/50/75/100
16*35/50/75/100	41*35/50/75/100
17*35/50/75/100	42*35/50/75/100
18*35/50/75/100	43*35/50/75/100
19*35/50/75/100	44*35/50/75/100
20*35/50/75/100	45*35/50/75/100
21*35/50/75/100	46*35/50/75/100
22*35/50/75/100	47*35/50/75/100
23*35/50/75/100	48*35/50/75/100
24*35/50/75/100	49*35/50/75/100
25*35/50/75/100	50*35/50/75/100
26*35/50/75/100	51*35/50/75/100
27*35/50/75/100	52*35/50/75/100
28*35/50/75/100	53*35/50/75/100
29*35/50/75/100	54*35/50/75/100
30*35/50/75/100	55*35/50/75/100
31*35/50/75/100	56*35/50/75/100
32*35/50/75/100	57*35/50/75/100
33*35/50/75/100	58*35/50/75/100
34*35/50/75/100	59*35/50/75/100
35*35/50/75/100	60*35/50/75/100
36*35/50/75/100	

HSS Annular Cutter with 31.75mm Weldon Shank	
ømm	ømm
61*35/50/75/100	81*35/50/75/100
62*35/50/75/100	82*35/50/75/100
63*35/50/75/100	83*35/50/75/100
64*35/50/75/100	84*35/50/75/100
65*35/50/75/100	85*35/50/75/100
66*35/50/75/100	86*35/50/75/100
67*35/50/75/100	87*35/50/75/100
68*35/50/75/100	88*35/50/75/100
69*35/50/75/100	89*35/50/75/100
70*35/50/75/100	90*35/50/75/100
71*35/50/75/100	91*35/50/75/100
72*35/50/75/100	92*35/50/75/100
73*35/50/75/100	93*35/50/75/100
74*35/50/75/100	94*35/50/75/100
75*35/50/75/100	95*35/50/75/100
76*35/50/75/100	96*35/50/75/100
77*35/50/75/100	97*35/50/75/100
78*35/50/75/100	98*35/50/75/100
79*35/50/75/100	99*35/50/75/100
80*35/50/75/100	100*35/50/75/100

### MAGNETIC STAND HEXAGONAL BASE - WDH WITH MS



Suitable for Mounting  
WDH / WDHC / WDH12 /  
WDHC12 / NW8 / NW10

### MAGNETIC STAND ROUND BASE - WDH WITH MS 10



Suitable for Mounting  
WDH / WDHC / WDH12 /  
WDHC12 / NW8 / NW10

### MAGNETIC STAND RECTANGULAR BASE - WDH WITH MS 50



Suitable for Mounting -  
WDH / WDHC / WDH12 /  
WDHC12 / NW8 / NW10

### MAGNETIC STAND HEXAGONAL BASE - NW10 with MS



Suitable for Mounting  
NW8 / NW10

### MAGNETIC STAND ROUND BASE - NW10 with MS10



Suitable for Mounting  
NW8 / NW10

### MAGNETIC STAND RECTANGULAR BASE - NW10 with MS50



Suitable for Mounting  
NW8 / NW10

### MECHANICAL STANDS

ES 1 For EG2C/EJ3C,  
ES 3 for NW8 / NW10



ES 14 For WD2C, WD3C,  
WD34C, SD4C & TS35C  
ES 23 for WDH / WDHC



### ATTACHMENT

Internal Grinding  
Attachment,  
IGA, Suitable for GL3



Flexible Shaft 10 FD  
Suitable for FF2/FSG2



### 14" CUT-OFF WHEEL BROWN SERIES

355X2.8X25.4mm



Item Code	3340.1.11.2
Dimension	355mm x 2.8mm x 25.4mm
Colour	Brown
Type	Double Net
Gross Weight of	33kg, 50 pcs (2 bundles
Master Box	of 25 nos each)

### Fast fixture



Spindle Morse 2# Taper Shank, 19.05mm  
(inner hole), weldon shank  
Spindle Morse 3# Taper Shank, 19.05mm  
(inner hole), weldon (self-locking shank)  
with cooling jacket  
Spindle Morse 3# Taper Shank, 19.05mm  
(inner hole), weldon shank with cooling jacket  
Spindle Morse 3# Taper Shank 31.75mm  
(inner hole), weldon shank with cooling jacket



### Drill Chuck Adaptor ( Morse Taper shank )

Morse Taper 2#(inner)-Morse Taper 3#(outer)  
B13 Spindle Connection-Morse Taper 2#  
B16 Spindle Connection-Morse Taper 2#  
B16 Spindle Connection-Morse Taper 3#

### Drill Chuck Adaptor (Shank type)



TNIN shank/quick release shank  
Universal shank/nitto shank  
Weldon shank



### Twist Drill Chuck

Twist Drill Chuck 3/8"  
Twist Drill Chuck 1/2"  
Twist Drill Chuck 5/8"  
Twist Drill Chuck MT2 B-13"  
Twist Drill Chuck MT2 B-16"



**LIGHT DUTY DRILL 6mm / 10mm**

- Compact in size
- Sturdy metal body construction
- For light engineering applications

235V / 115V

Model	EG2C	EJ3C
Watts Input (Full Load)	235 Watts	235 Watts
No Load Speed	2800 r.p.m.	700 r.p.m.
Approx Net Weight	2 kg.	2.3 kg.

(Bench drill stand is available separately as accessories)

**LIGHT DUTY DRILL 13mm**

- Sturdy metal body construction.
- Widely used for general purpose maintenance in industries due to unique two way holding

235V / 115V

Model	SD4C
Watts Input (Full Load)	435 Watts
No Load Speed	700 r.p.m.
Approx Net Weight	4.4 kg.

(Bench drill stand is available separately as accessories)

**TWO SPEED DRILL 10mm / 16mm**

- Sturdy metal body construction.
- Mechanically operated two speed gear box design
- Used in tool room/maintenance workshops

235V

Model	TS35C
Watts Input (Full Load)	600 Watts
No Load Speed	1380 r.p.m. / 560 r.p.m.
Approx Net Weight	5.4 kg.

(Magnetic &amp; bench drill stand is available separately as accessories)

**HEAVY DUTY DRILL (Chuck Model) 20mm**

- Sturdy metal body construction.
- For parallel shank drilling to full capacity
- Used in engine rebuilding workshops for honing.
- Suitable for mounting on drill stands.

235V

Model	WDHC	WDHC12
Watts Input (Full Load)	595 Watts	1200 Watts
No Load Speed	560 r.p.m.	450 r.p.m.
Approx Net Weight	8.2 kg.	8.4 kg.

(Magnetic &amp; bench drill stand is available separately as accessories)

**HIGH SPEED GRINDER 6mm**

- HSG - Unique Pistol grip metal body construction
- HSG BR - Typically used for intricate grinding in boiler maintenance work.

235V / 115V

Model	HSG	HSG BR
Watts Input (Full Load)	300 Watts	500 Watts
No Load Speed	16000 r.p.m.	20000 r.p.m.
Approx Net Weight	1.9 kg.	1.9 kg.

**HEAVY DUTY DRILL 6mm / 10mm**

- Sturdy metal body construction
- Heavy duty for continuous production work such as coach building industries due to high speed

235V / 115V

Model	WD2C	DW3C	WD34C
Watts Input (Full Load)	475 Watts	550 Watts	500 Watts
No Load Speed	2400 r.p.m.	1000 r.p.m.	550 r.p.m.
Approx Net Weight	3.1 kg.	3.6 kg.	3.9 kg.

(Bench drill stand is available separately as accessories)

**HEAVY DUTY DRILL 13mm**

- Powerful Motor, Double insulated
- Preferred in truck body building for perfect grip due to two way holding & end breast plate.

235V / 115V

Model	14130
Watts Input (Full Load)	750 Watts
No Load Speed	750 r.p.m.
Approx Net Weight	4.4 kg.

**HEAVY DUTY DRILL 13mm to 23mm**

- Sturdy metal body construction
- For continuous drilling in structural engineering work
- Suitable for mounting on drill stands.

235V

Model	WDH	WDH12
Watts Input (Full Load)	595 Watts	1200 Watts
No Load Speed	560 r.p.m.	450 r.p.m.
Approx Net Weight	7 kg.	7.2 kg.

(Magnetic &amp; bench drill stand is available separately as accessories)

**HEAVY DUTY DRILL 25mm / 31mm**

- Sturdy metal body construction
- For continuous drilling to full capacity in heavy outdoor fabrication works.
- Suitable for mounting on drill stands.

235V

Model	NW8	NW10
Watts Input (Full Load)	660 Watts	850 Watts
No Load Speed	380 r.p.m.	280 r.p.m.
Approx Net Weight	9.9 kg.	10 kg.

(Magnetic &amp; bench drill stand is available separately as accessories)

**FLEXIBLE SHAFT GRINDER 6mm TWO SPEED / 6mm SINGLE SPEED**

- FF2- Flexible shaft provides ease of operation.
- FSG2 - For grinding & deburring of intricate parts.

235V / 115V

Model	FF2	FSG2
Watts Input (Full Load)	370 Watts	370 Watts
No Load Speed	1200/11500 r.p.m.	12800 r.p.m.
Approx Net Weight	5.4 kg.	4.9 kg.

**STRAIGHT GRINDER 100mm**


- GQ4 - Sturdy metal body construction.
- GQ4 BR11- Used for buffing / polishing / derusting operation.

235V / 115V

Model	GQ4	GQ4BR11
Capacity	ø100xø20x12.7mm	ø100xø20x12.7mm
Watts Input (Full Load)	775 Watts	1100 Watts
No Load Speed	5000 r.p.m.	5600 r.p.m.
Approx Net Weight	5.6 kg.	6.5 kg.

**STRAIGHT GRINDER 150mm**


- Sturdy metal body construction.
- For continuous fettling work in steel foundries.
- Used for buffing / polishing after electroplating work.

235V

Model	GQ6
Capacity	ø150xø25x15.9mm
Watts Input (Full Load)	1200 Watts
No Load Speed	5600 r.p.m.
Approx Net Weight	9.2 kg.

**HEAVY DUTY ANGLE GRINDER 180mm / 230mm**


- Sturdy metal body construction
- Ideally suitable for continuous fettling of castings.
- Typically used as rail profile grinder

235V

Model	AG7	AG9
Capacity	ø180xø22x6mm	ø230xø22x6mm
Watts Input (Full Load)	2200 Watts	2200 Watts
No Load Speed	7000 r.p.m.	5600 r.p.m.
Approx Net Weight	9.5 kg.	9.5 kg.

**SINGLE SPEED AIR BLOWER 1.5m³/min**


- Used for blowing away dust particles, grit, swarf.
- Can be equipped in air sampling equipments

235V

Model	NWB
Watts Input (Full Load)	350 Watts
Air Velocity	308 kmph
Approx Net Weight	4.5 kg.

**VERTICAL SANDER 180mm**


- Low RPM finds application for finishing of flat sheet metal surfaces such as transformer radiator industry.

235V

Model	VSM
Watts Input (Full Load)	500 Watts
No Load Speed	2200 r.p.m.
Approx Net Weight	5.4 kg.

**STRAIGHT GRINDER 100mm**


- Light weight & Double insulated
- Preferred choice for buffing/polishing of stainless steel railings. Also derusting of steel surface.

235V / 115V



Model	36100
Capacity	ø100xø20x12.7mm
Watts Input (Full Load)	1000 Watts
No Load Speed	5800 r.p.m.
Approx Net Weight	5.1 kg.

**LATHE GRINDER 75mm**


- Tool post Grinder
- For precision external & internal grinding in machine shop

235V / 115V

Model	GL3
Capacity	ø75xø13x19mm
Watts Input (Full Load)	400 Watts
No Load Speed	EX8000/Internal 19000 r.p.m.
Approx Net Weight	9.8 kg.

**BENCH GRINDER 150mm**


- Used for grinding tool bits, drill bits etc. in tool room

235V

440V

Model	TG6 1ph	TG6 3ph
Watts Input (Full Load)	ø150xø16x12.7mm	ø150xø16x12.7mm
No Load Speed	265 Watts	285 Watts
Approx Net Weight	2950 r.p.m.	2950 r.p.m.
	12.2 kg.	12 kg.

**TWO SPEED AIR BLOWER 2.0m³/min 1.6m³/min**


- Two speed blower with powerful motor.
- Widely used in blowing away dust from electrical panels, motors etc. in industrial segment.

235V



Model	77750 High Speed	77750 Low Speed
Watts Input (Full Load)	750 Watts	450 Watts
Air Velocity	400 kmph	315 kmph
Approx Net Weight	3.4 kg.	3.4 kg.

**HORIZONTAL SANDER 180mm**


- Sturdy metal body construction
- Used in wood working industries & for high surface finish in sectors like defence establishments.

235V

Model	HS7 AR	HS7 BR
Watts Input (Full Load)	600 Watts	1000 Watts
No Load Speed	4200 r.p.m.	5200 r.p.m.
Approx Net Weight	5.2 kg.	5.7 kg.



## ARC SERIES (INVERTER)



### Features

- Compact design, light weight, portable
- Steady current O.P., superior arc performance
- Precise current control
- Minimal spatter
- Energy saving with dynamic welding characteristics & high efficiency.

### Applications :

General Fabrication / Maintenance Works

**Rath Wolf**



Products Type	ARC 200	ARC 200	ARC 200	ARC 200	ARC 200
Model	R76	WA20	RA20	MA20	ECO200N
Input Supply (V)	AC 220±15%, 1Ph	AC 220 ±15%, 1Ph	AC 220±15%, 1Ph	AC 220±15%, 1Ph	AC 220 ± 15%, 1Ph
Frequency (HZ)	50/60	50/60	50/60	50/60	50/60
Rated Input Current (A)	47	34	43.6	26	26
Power (KVA)	10.1	8.2	9.59	6	6
No-load Voltage (V)	70	68	58	58	58
Output Current Range (A)	30-220	30-200	30-200	20-200	20 - 200
Rated Output Voltage (V)	29	28	28	26	26
Duty Cycle (%)	60	60	60	60	60
No-load Loss (W)	40	40	40	40	40
Efficiency (%)	85	85	80	80	85
Power Factor	0.73	0.73	0.73	0.73	0.73
Insulation Grade	F	F	F	F	F
Protection Grade	IP 21	IP 21	IP 21	IP 21	IP21
Inverter Technology	IGBT	IGBT	MOSFET	MOSFET	IGBT
Net Weight (Kg)	8.2	6.5	8	8	6
Welding Accessories	YES	YES	YES	YES	YES



## ARC SERIES (INVERTER)



### Features

- Electrode 1.6-3.15 mm continuous use  
Electrode 4.00 mm -Intermittent use.
- Excellent Arc Strike with inbuilt Arc Force & Hot start.
- Quick & minium maintenance with single PCB design.

### Applications :

General Fabrication / Maintenance Works



Products Type	ARC 250	ARC 250	ARC 250	ARC 300
Model	RA25S	RA25	ECO-250	RA30-1&2
Input Supply (V)	AC 230±15%, 1Ph	AC 415±15%, 3Ph	AC 230V ± 15%, 1Ph	AC 230V ±15%,1Ph / 415V±15%,2Ph
Frequency (HZ)	50/60	50/60	50/60	50/60
Rated Input Current (A)	40	13	36	56/15
Power (KVA)	9.4	9.4	8.3	13/6
No-load Voltage (V)	70	60	66	60
Output Current Range (A)	30-250	30-250	20 - 250	20-300
Rated Output Voltage (V)	30	30	28	30
Duty Cycle (%)	60	60	60	60
No-load Loss (W)	40	40	35	60
Efficiency (%)	85	85	85	80
Power Factor	0.73	0.93	0.73	0.73/0.93
Insulation Grade	F	F	F	F
Protection Grade	IP 21S	IP 21	IP21	IP 21
Inverter Technology	MOSFET	MOSFET	IGBT	IGBT
Arc Force Control	YES	YES	IN BUILT	YES
Net Weight (Kg)	17.5	17.5	7	7.5
Welding Accessories	NO	NO	YES	YES



## ARC SERIES (INVERTER)

**Rath Wolf**



### Features

- Adjustable ARC FORCE & HOT START knobs on selective models
- VRD (Voltage Reduction Device) Facility
- Optional Remote Control Facility
- Scratch - Start TIG Welding with optional TIG Accessories
- Optional Cellulosic Electrodes Facility on Selected Models

### Applications :

Suitable for General Purpose, Low Hydrogen, Stainless Steel Electrodes etc.



Products Type	ARC 400HK	ARC 400H	ARC 400 IJ	ARC 500 IJ	ARC 600I	ARC 630
Model	RA40HK	RA40H	RA40	RA50	RA60	RA63
Input Voltage (V)	AC 415±15%,3Ph	AC 415±15%,3Ph	AC 415±15%,3Ph	AC 415±15%,3Ph	AC 415±15%,3Ph	AC 415±15%,3Ph
Frequency (HZ)	50/60	50/60	50/60	50/60	50/60	50/60
Rated Input Current (A)	15.3	23.4	25.3	35	42	53.1
Power (KVA)	11	16.8	18.2	25.3	30	32
No-load Voltage (V)	63	75	75	80	75	72
Output Current Range (A)	30-400	40-400	40-400	40-500	30-630	30-630
Rated Output Voltage (V)	32	36	36	40	44	45
Duty Cycle (%)	60	60	60	60	60	60
No-load Loss (W)	40	80	80	80	85	85
Efficiency (%)	85	85	85	85	85	85
Power Factor	0.93	0.93	0.93	0.93	0.93	0.93
Insulation Grade	F	F	H	F	H	H
Housing Protection Grade	IP 21	IP 21	IP 23	IP 21	IP 23	IP 23
Inverter Technology	IGBT	IGBT	IGBT	IGBT	IGBT	IGBT
Net Weight (Kg)	12.5	18	28	40	48	54
Welding Accessories	Optional	Optional	Optional	Optional	Optional	Optional



## ARC SERIES (FULLY THYRISTORISED)



### Features

- Six Thyristors in Hexaphase configuration ensures
- Dynamic welding characteristics with stable O.P.
- Excellent ARC striking upto 100mtr. cable length
- High metal recovery Ideal product for site condition
- Optional Remote Control & VRD facility

### Applications :

Suitable for General Purpose, Low Hydrogen, Stainless Steel Electrodes etc.

Products Type	ARC 400	ARC 600
Model	RT400	RT600
Input Supply (V)	AC 415±10%, 3ph	AC 415±10%, 3ph
Frequency (HZ)	50	50
Rated Input Current (A)	30	54
Rated Power (KVA)	21.5	39
No-load Voltage (V)	95	95
Output Current Range (A)	10-400	10-600
Rated Output Voltage (V)	36	44
MCHWC (60%)	400A	600A
MAWC (100%)	310A	470A
Welding Current Control	Stepless	Stepless
Insulation Grade	H	H
Protection Grade	IP-23	IP-23
Cooling	Forced Cool	Forced Cool
Technology	THYRISTORISED	THYRISTORISED
Net Weight (Kg)	112kg	145kg
Dimension in MM (LxWxH)	700x400x750	700x500x900
Welding Accessories	Optional	Optional

## FCT SERIES



### Features

- Robust coil design for long service life
- Superior dynamic characteristics
- High metal recovery • Uniform current scale
- Current indicator and controlling handle on front panel
- Two large rear wheels with front Castor/Stay
- Conforms to IS -1851
- Fitted with ON/OFF Switch

ARC 400	ARC 450	ARC 600
FCT 400	FCT 450	FCT 600
AC 380/415/440V, 2 Lines of 3ph		
50	50	50
55	80	94
23	33	39
78 (Max)	80 (Max)	80 (Max)
75-400	50-450	60-600
36	38	44
300A	400A	500A
330A	310A	380A
Stepless	Stepless	Stepless
H	H	H
IP-23	IP-23	IP-23
Forced Cool	Forced Cool	Forced Cool
Moving Core Type	Moving Core Type	Moving Core Type
85kg	130kg	150kg
710x475x540	830x560x700	839x560x700
Optional	Optional	Optional



## ENGINE DRIVEN WELDING GENERATOR



### Features

- Brushless Welding Generator for MMA Welding
- Inbuilt Auxiliary Power Supply of 230 & 415 V
- Allows long lead up to 100 meters
- Optional Remote Control Facility
- Equipped with Battery Charging Indicator, Fuel Indicator, Temperature Indicator, Low Oil Pressure Indicator, RPM Meter, Start / Stop Switch, Ammeter, Voltmeter, Hour Meter
- Meets CPCB noise & engine emission norms



## SUBMERGE ARC WELDING



### Features

- Multi-Functional : SAW, MMA and Carbon Gouging
- Auto protection against over Voltage and over Current
- High efficiency & energy saving design
- Lightweight and easy to transport
- Advanced IGBT Technology

### Applications :

Pressure Vessels/Structural Fabrications/ Ship Building/Locomotives etc.

MODEL	RWG-350	RWG-400	RWG-500
Engine	3385 TCI-GM	4575 TCI-GM	4575 TCI-GM
HP / KW	35 / 26	52 / 38	52 / 38
Engine RPM	1500	1500	1500
Cylinders	3	4	4
Bore & Stroke (mm)	88.9 x 101.6	88.9 x 110	88.9 x 110
Fuel	HSD	HSD	HSD
Engine Conforms to	IS:10000 /BS :5514	IS:10000 /BS :5514	IS:10000 /BS :5514
Fuel tank Capacity	65 ltrs	80 ltrs	80 ltrs
Cooling	Coolant Cooled	Coolant Cooled	Coolant Cooled
Welding Current	10 - 350 Amps	20 - 400 Amps	30 - 500 Amps
Output@60% duty	300 Amps	400 Amps	400 Amps
Output@100% duty	230 Amps	310 Amps	310 Amps
OCV	90 V	70V	70 V
Insulation Class	H	H	H
Auxiliary Unit	2.5 KVA, 1 Ph ,230V & 7.5 KVA, 3Ph, 415 V	2.5 KVA, 1 Ph,230V & 10 KVA, 3Ph, 415 V	2.5 KVA, 1 Ph ,230V & 10 KVA, 3Ph, 415 V
Dimension (mm)	3150 x 1700 x 2900	3560 x 1700 x 2970	3560 x 1700 x 2970
Approx Weight (Kg)	1100	1300	1300

Products Type	MZ 1000	MZ 1250
Model	RS100	RS125
Input Voltage (V)	AC 415±10%, 3ph	AC 415±10%, 3ph
Frequency (HZ)	50/60	50/60
Rated Input Current (A)	73.2	90
Power (KVA)	52	64.5
No-load Voltage (V)	79	80
Output Current Range (A)	100-1000	100-1250
Rated Output Voltage (V)	44	44
Duty Cycle (%)	60	60
No-load Loss (W)	300	300
Efficiency (%)	85	85
Power Factor	0.93	0.93
Insulation Grade	F	F
Housing Protection Grade	IP21	IP 21
Arc Force Current Range (A)	0-100	0-100
Technology	IGBT	IGBT
Net Weight (Kg)	85	98
Standard Accessories	Inter Connection Cable 10mtr, Earthing Cable with Clamp 2mtr	



## AIR PLASMA CUTTING



### Features

- Easy to cut metals in a fast and economical way • Energy Saving
- Pilot-Arc to Extend the Durability of Consumables
- Suitable for cutting stainless steel, copper, carbon steel, aluminium and other metals
- Optional Trolley & Machine Mounting Type Torch for Specific Applications

### Applications :

General Fabrication / Constructions & Other Engineering Industries.



Products Type	CUT 60G	CUT 100 IJ	CUT 160
Model	RC60	RC10	RC16
Input Voltage (V)	AC 415±15%, 3ph	AC 415±15%, 3ph	AC 415±15%, 3ph
Frequency (HZ)	50/60	50/60	50/60
Rated Input Current (A)	11	21	44
Power (KVA)	8	15.1	29
No-load Voltage (V)	290	320	320
Output Current Range (A)	20-60	20-100	20-160
Rated Output Voltage (V)	104	120	144
Duty Cycle (%)	60	60	60
No-load Loss (W)	60	80	85
Efficiency (%)	85	85	85
Power Factor	0.93	0.93	0.93
Insulation Grade	F	F	F
Housing Protection Grade	IP 21S	IP 21S	IP 21
Arcing Way	Pilot arc transfer	Pilot arc transfer	Pilot arc transfer
Technology	IGBT	IGBT	IGBT
Required Air Pressure (Kg/cm2)	4-5	4.5-6	0.4-0.6
Cutting Thickness (mm)	1-15	1-30	1-50
Net Weight (Kg)	14.5	26.5	60
Standard Accessories	Plasma Torch, FRL Unit, Earthing Cable with Clamp		



## MIG SERIES



## MMA

**Rail Wolf**



### Features

- Energy Saving With High Power Factor & Efficiency
- Inductance Control Ensures Superior Welding Performance
- 2T/4T Operating Modes
- Crater Current / Voltage Control Facility
- 4 Roll Drive Wire Feeder Unit In Selected Models For Better Traction & Wire Feeding
- Both GMAW & MMAW Operations From Single Power Source

### Applications :

General Fabrication / Pipe Welding / Construction / Automobile / Railways / Furniture Industries etc



Products Type	MIG 200S	MIG 250	MIG 400 IJ	MIG 500 IJ	MIG 630 I
Model	RM20	RM25	RM40N	RM50	RM63
Input Voltage (V)	AC 220±15%, 1ph	AC 415±15%, 3ph	AC 415±15%, 3ph	AC 415±15%, 3ph	AC 415±15%, 3ph
Frequency (HZ)	50/60	50/60	50/60	50/60	50/60
Rated Input Current (A)	37.7	11.1	21.1	35.1	55
Power (KVA)	8.2	8.4	15	25.3	36.2
Output Current Range (A)	50-200	50-250	50-400	80-500	100-630
Rated Output Voltage (V)	16.5-26.5	16.5-26.5	16.5-31.5	18-39	19-44
Duty Cycle (%)	60	60	60	60	60
Power Factor	0.73	0.93	0.93	0.93	0.93
Efficiency (%)	80	85	85	85	85
Wire-feeding Speed (m/min)	2.5-18	2.5-18	2.5-18	2.5-16.2	3-15
Wire Diameter	0.8	0.8/1.0	0.8/1.0/1.2	1.0/1.2/1.6	1.0/1.2/1.6
Output Cable (mm)	25+	25+	35+	50+	70+
MMA Facility	Available	Available	Available	Available	Available
Inverter Technology	IGBT	IGBT	IGBT	IGBT	IGBT
Type Wire Feeder	In-Built/2roll	Separated/2 roll	Separated/4 roll	Separated/4 roll	Separated/4 roll
Net Weight (Kg)	30	18	28	42	45
Standard Accessories	MIG Torch (Euro), Interconnection Cable, CO2 R/F/H, Earthing Cable with Clamp				



## TIG SERIES



## MMA



### Features

- Smooth & Stable Arc With Spatterless Welding
- Pre & Post-flow functions
- Pulse Facility In Selected Models
- Aluminium Welding Option In Selected Models
- Economies in tungsten use with H F Ignition
- Optional Water Cooled Torch & Water Recirculating Unit On Particular Applications

### Applications :

Ship Building / Pipe Welding / Furniture / Automobile Industries / Railways etc



Products Type	TIG 200 A	TIG 200 AC/DC	TIG 250 A	TIG 315P AC/DC	TIG 400 IJ	TIG 500 IJ	TIG 630
Model	RT20	RT20A	RT25	RT31PA	RT40	RT50	RT63
Input Voltage (V)	AC 220±15%, 1ph	AC 220±15%, 1ph	AC 415±15%, 3ph	AC 415±15%, 3ph	AC 415±15%, 3ph	AC 415±15%, 3ph	AC 415±15%, 3ph
Rated Input	28.2/43.6	28.2/43.6	9.0/13.0	12.3/17.9	18.2/25.3	26.2/35.0	43.2/53.1
Power (KVA)	9.59	9.59	9.5	12.9	18.2	25.2	38.16
No-load Voltage	56	54	70	54	70	70	72
Output Current	10-200	10-200	10-250	5-315	10-400	10-500	40-630
Rated Output Voltage (V)	28	18	30	22	36	38	40
Duty Cycle (%)	60	60	60	60	60	60	60
No-load Loss (W)	40	80	40	80	80	80	80
Efficiency (%)	80	80	85	85	85	85	85
Power Factor	0.73	0.73	0.93	0.93	0.93	0.93	0.93
Pre-Flow (Sec.)	0	2	0	0-2	2.5	2.5	0-2.5
Post-Flow (Sec.)	2.5	0-2.5	0-2.5	0-5	0-5	0-5	0-0.5
Arcing Way	High Frequency	High Frequency	High Frequency	High Frequency	High Frequency	High Frequency	High Frequency
Net Weight (Kg)	8	22.1	17.5	34	29.5	42	54
MMA Function	Available	Available	Available	Available	Available	Available	Available
Inverter Technology	MOSFET	MOSFET	MOSFET	MOSFET	IGBT	IGBT	IGBT
Standard Accessories	Suitable TIG Torch, Earthing Cable with Clamp						



## CNC FLAME / PLASMA CUTTING MACHINE

### Cantilever Type



MODEL	RCN 1500	RCN 1500 P
Type	Gas	Plasma
Cutting Width	1500 mm	1500 mm
Cutting Length	3000 mm	3000 mm
Rapid Speed	3000 mm/min.	3000 mm/min.
Input Supply	1 Ph. / 230V 50 Hzs	1 Ph. / 230V 50 Hzs
Torch Holder	Motorised	With height sensor
Operation Panel	7" LCD	7" LCD
Language	English	English
Shape Library	24 shapes	24 shapes
Program Input	USB Stick	USB Stick
Cutting Thickness	70 mm	Plasma source
Torch Lift Distance	≤90mm	≤90mm
Accuracy	± 0.2mm/m	± 0.2mm/m

#### Benefits :

- Fast production with high accuracy
- Efficient production with minimum wastage of material
- Lower production cost    Uniformity of products
- High versatility covers wide range of materials
- Can easily cut intricate shapes & sizes

#### Applications :

Automobile Industries/ Fabrication Shops / Furnitures/ Constructions/ Scrapping operations

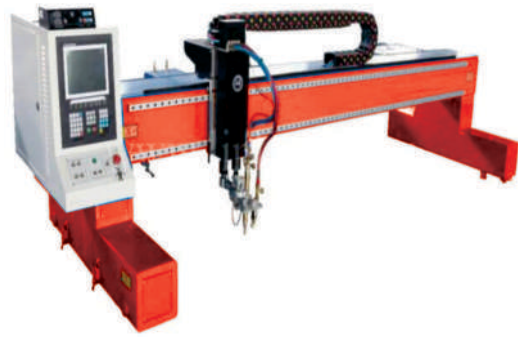
## STUD WELDING MACHINE

### C.D 208 Microprocessor Based



Products Type	C.D 208
Welding	M3-M8 with Mild Steel and Stainless Steel, Aluminium and Brass
Range	3mm-8mm
Welding Method	Tip Ignition
Power Source	Capacitor Bank
Charging Capacity	75,00 uf
Charging Voltage	45-200 V-DC Settable
Welding Time	0.001 - 0.003 sec.
Welding Output	upto 20-25 studs/min
Mains Supply	230 V AC 500VA, fuse 3, 20 amp
Connected Cable	3 mtr + earthing cable 3 mtr
Dimensions	15"x11"x9" (LxWxH)
Weight	19 kg

### Gantry Type Flame / Plasma Cutting Machine



Model	RWG2506	RWG3506	RWG3508	RWG4008
Track Width (mm)	2500	3500	3500	4000
Track Length(mm)	6000	6000	8000	8000

Cutting Head • One Flame and One Plasma

### Bench Type Plasma Cutting Machine



Model	RWB1503	RWB1506
Track Width (mm)	1500	1500
Track Length(mm)	3000	6000

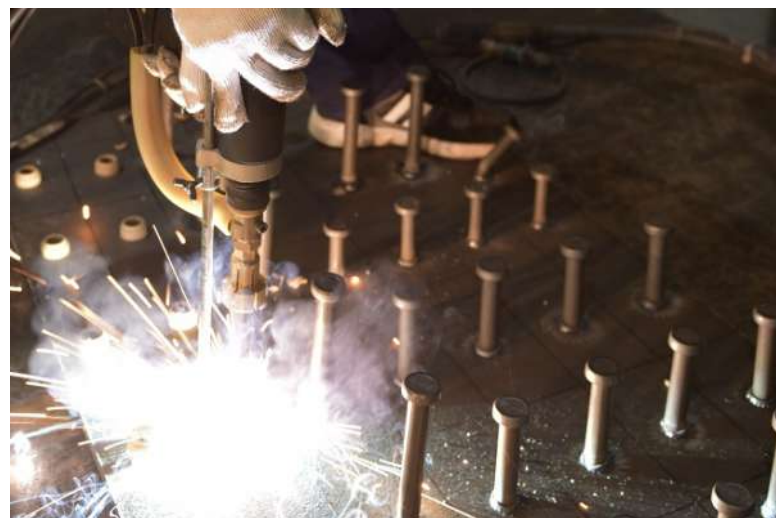
Cutting Head • One Flame and One Plasma

#### Benefits of Stud Welding

- Strength • Fast attachment
- Cost effective • No weld spatter
- Many Applications • Painted or precoated items

#### Application

- Food service equipment
- Architectural • Lighting • Nameplates
- Tools • Shipbuilding • Construction
- Elevator panels • Bridge



## LASER WELDING MACHINE

## LASER MARKING MACHINE

### Features

- Easy to Weld with clean Welds and Accurate
- Portable • Low cost of ownership
- Homogenous fusion of material

Laser Power	1 Kw/1.5 Kw/2 Kw /3Kw
Beam Width	0.2 to 5mm (Depending on Welding Head)
Laser Wavelength	1070 nm
Optical Fiber	100um, 5m
Cooling Medium	1000 Hz
Continuous Working Time	24 Hours
Power Supply Demand	200 10%, 50Hz
Head Type	Wobble with Galvo Technology

### Applications

Utensils	Solar Industry
Jewellery	Tools & Tooling
Electronics	Medical & Surgical
Automobile	Die & Mould Engraving
Commercial	Kitchen Ware & Bath Fitting
Engineering	Color Marking in SS Material

### Laser Marking Machine

Laser Type	Fiber Laser
Average O/P Power	20W (Optional 30, 50, 100)
Operating Voltage	100-240V AC/50-60 Hz
Electric Consumption	< 1 Kw
Graphics Format	PLT, DXF, BMP, MPT, TIF etc.

## OPEN TYPE FIBER LASER CUTTING MACHINE



Laser Type	Fiber Laser Source IPG / Raycus/ Max
Laser wave length	1070-1080nm
XYZ axis working length	3000mm/1500mm/120mm
Cutting thickness	0.5-16mm (Depend on materials)
Traverse Speed	120M/min
Maximum acceleration	1.5G
Total machine weight	4000kg Approx.
Power demand	380V 50Hz/60Hz
Dimension ( L x W x H)	4600mm*2750mm*1500mm

Model	RWL3015	RWL4015	RWL6015	RWL4020	RWL6020
Track Width (mm)	1500	1500	1500	2000	2000
Track Length(mm)	3000	4000	6000	4000	6000

## EXCHANGE TABLE TYPE FIBER LASER CUTTING MACHINE



Laser Type	Fiber Laser Source IPG / Raycus/ Max
Laser wave length	1070-1080nm
XYZ axis working length	3000mm/1500mm/120mm
Cutting thickness	0.5-16mm (Depend on materials)
Traverse Speed	120M/min
Maximum acceleration	1.5G
Total machine weight	7000kg Approx.
Power demand	380V 50Hz/60Hz
Dimension ( L x W x H)	8500mm*2900mm*1900mm

Model	RWE3015	RWE4015	RWE6015	RWE4020	RWE6020
Track Width (mm)	1500	1500	1500	2000	2000
Track Length(mm)	3000	4000	6000	4000	6000

## SHEET AND TUBE FIBER LASER CUTTING MACHINE



Laser Type	Fiber Laser Source IPG / Raycus/ Max
Laser wave length	1070-1080nm
XYZ axis working length	3000mm/1500mm/120mm
Cutting thickness	0.5-16mm (Depend on materials)
Traverse Speed	100M/min
Maximum acceleration	1G
Total machine weight	5500kg Approx.
Power demand	380V 50Hz/60Hz
Dimension ( L x W x H)	4600mm*3600mm*2100mm

Model	RWP3015	RWP4015	RWP6015	RWP4020	RWP6020
Track Width (mm)	1500	1500	1500	2000	2000
Track Length(mm)	3000	4000	6000	4000	6000

## DRILL

**3/8" REVERSIBLE DRILL  
RAD302**

Drilling Cap	3/8"
Free Speed	1800 r.p.m.
Air Inlet	1/4"
Air Hose	3/8"
Air Consumption	6 cfm
Overall Length	180mm
Net Weight	1.1 Kg

**1/2 " REVERSIBLE DRILL  
RAD402**

Drilling Cap	1/2"
Free Speed	800 r.p.m.
Air Inlet	1/4"
Air Hose	3/8"
Air Consumption	8 cfm
Overall Length	203 mm
Net Weight	1.6 Kg

**3/8" AIR ANGLE DRILL  
ADDR217**

Drilling cap	3/8"
Free speed	1900 r.p.m.
Air Inlet	1/4"
Air Hose	3/8"
Air Consumption	9.9 cfm
Overall Length	190 mm
Net Weight	0.96 Kg

## AIR DIE GRINDER

**AIR DIE GRINDER  
PG144**

Collet Size	6 mm
Free Speed	25000 rpm
Air Inlet	1/4"
Air Consumption	2.5 cfm
Overall Length	150 mm
Net Weight	0.36 Kg

**AIR DIE GRINDER  
PG1101H**

Collect Size	1/4"
Free Speed	28000 r.p.m.
Air Inlet	6.3 mm
Air Consumption	3.5 cfm
Overall Length	160mm
Net Weight	0.37 Kg

**5" EXTENDED DIE GRINDER  
EDGGR2205**

Collet Size	1/4"
Free Speed	22,000 r.p.m.
Air Inlet	1/4"
Air Consumption	3.1 CFM
Overall Length	280 mm
Net Weight	0.80 Kg

**5" EXTENDED DIE GRINDER  
EDGGR2205A**

Collet Size	1/4"
Free Speed	23,000 r.p.m.
Air Inlet	1/4"
Air Consumption	5.0 SCFM
Overall Length	285 mm
Net Weight	0.70 Kg

**AIR MICRO DIE GRINDER  
DG56**

Collet Size	3 mm
Free Speed	56000 r.p.m.
Air Inlet	1/4"
Air Consumption	7.0 cfm
Air Hose	5 mm
Overall Length	156 mm
Net Weight	0.21 Kg

**1/4" HD 90° ANGLE GRINDER  
ADG1106H**

Collect Size	1/4"
Free Speed	20000 r.p.m.
Air Inlet	1/4"
Air Consumption	3.5 cfm
Overall Length	160 mm
Net Weight	0.49 Kg

**AIR ANGLE GRINDER**
**AIR ANGLE GRINDER  
AG406**


Capacity	4" or 100mm
Free Speed	11000 r.p.m.
Air Inlet	1.4"
Air Consumption	6 cfm
Air Hose	3/8" (10mm)
Overall Length	242 mm
Net Weight	1.82 Kg

**5" ANGLE GRINDER  
AG449**


Capacity	5" (125 mm)
Free speed	11000 RPM
Air inlet	1/4" NPT
Air consumption	4.48 CFM
Spindle	M10 / M14
Overall length	225 mm
Weight	1.75 Kg

**7" ANGLE GRINDER  
AG-GR706**


Capacity	7" (180 Mm)
Free Speed	7000 Rpm
Spindle	M14
Air Inlet	3/8"
Air Hose	12 mm
Air Consumption	9 Cfm
Weight	3.18 Kg

**INDUSTRIAL GRINDER**
**INDUSTRIAL AIR DIE GRINDER  
DG35**


Capacity	6 mm
Free Speed	35000 rpm
Over All Length	165 mm
Air Inlet	1/4" NPT
Weight	0.45 Kg.

**EXTENDED AIR DIE GRINDER  
DGL21**


Capacity	6 mm
Free Speed	21000 r.p.m.
Over All Length	315 mm
Air Inlet	3/8" NPT
Weight	2.50 Kg.

**STRAIGHT GRINDER  
SG150**


Capacity	150mm x 25mm
Free Speed	6000 r.p.m.
Air Inlet	1/2" BSP
Weight	5.5 Kg.

**IMPACT WRENCH**
**COMPOSITE IMPACT WRENCH  
IW0981T**


Square Drive	3/8"
Bolt Capacity	1/2"(13mm)
Max Torque	280FT-LB (39KG-M, 380N-M)
Free Speed	10000 r.p.m.
Air Consumption	3.7 cfm
Air Inlet	1/4", Air Hose - 10 mm
Overall Length	170 mm
Net Weight	1.2 Kg

**IMPACT WRENCH  
IW760 (1/2" Sq. Drive)**


Square Drive	1/2"
Bolt Capacity	16 mm
Free Speed	7000 rpm
Max Torque	380 nm
Air Consumption	4.16 cfm
Overall Length	194 mm
Net Weight	2.12 Kg

**IMPACT WRENCH KIT  
IW1700K-A**


Square Drive	1/2"
Bolt Capacity	5/8"
Max Torque	600ft-lbs
Free Speed	7500 r.p.m.
Air Consumption	5.4 cfm
Air Inlet	1/4"
Air Hose	10 mm
Overall Length	190 mm
Net weight	2.4 Kg



IMPACT WRENCH KIT

IMPACT WRENCH KIT  
IWK007



Square Drive	1/2"
Bolt Capacity	16 mm
Free Speed	7000 rpm
Max Torque	300 Nm
Air Consumption	4.16 CFM
Overall Length	194 mm
Net Weight	2.4 Kg

COMPOSITE IMPACT WRENCH  
IW-1281 (1/2" Sq. Drive)



Square Drive	1/2"
Bolt Capacity	5/8" ( 16mm)
Max Torque	1000FT-LB (138KG-M,1356N-M)
Free Speed	10000 r.p.m.
Air Consumption	5.4 cfm
Air Inlet	1/4"
Air Hose	10mm
Overall Length	193 mm
Net Weight	2.2 Kg

IMPACT WRENCH  
IW161A (3/4")



Square Drive	3/4 "
Bolt Capacity	19 mm
Free Speed	4500 rpm
Max Torque	813 nm
Air Consumption	6.9 cfm
Overall Length	246 mm
Net Weight	4.56 Kg

COMPOSITE IMPACT WRENCH  
IW1930T (3/4" Sq. Drive)



Square Drive	3/4"
Bolt Capacity	19 mm
Max Torque	1000ft-lbs (1356nm)
Free Speed	9000 r.p.m.
Air Consumption	5.4 cfm
Air Inlet	1/4"
Air Hose	10 mm
Overall Length	200 mm
Net Weight	2.2 Kg

COMPOSITE IMPACT WRENCH  
IW-1982 (3/4" sq. Drive)  
IW2500 T-8 (1" Sq. Drive)



Square Drive	3/4"	1"
Bolt Capacity	19 mm	2" ( 50mm)
Max Torque	1100ft-lbs (1490nm)	2500FT-LB (345KG-M 3390N-M)
Free Speed	7500 r.p.m.	3800 r.p.m.
Air Consumption	9.7 SCFM	6.8 cfm
Air Inlet	1/4"	3/8"
Air Hose	10 mm	13 mm
Overall Length	198 mm	302 mm
Net Weight	2.14 Kg.	11.8 Kg.

AIR IMPACT WRENCH  
RW2570T8 (1" Sq. Drive)



Speed	2500 r.p.m.
Air Inlet	1/2"
Bolt Capacity	50 mm
Max. Torque	345 kg/m
Air Consumption	8.5 cfm
Overall Length	622 mm
Square Drive	1 inch
Net Weight	14.6 Kg.

COMPOSITE IMPACT WRENCH  
IW2500T2 (1" Sq. Drive)



Square Drive	1"
Bolt Capacity	2" (50 mm)
Max Torque	1800ft-lbs (2440 mm)
Free Speed	7500 r.p.m.
Air Consumption	11.3 SCFM
Air Inlet	1/2"
Air Hose	13 mm
Overall Length	440 mm
Net Weight	12.30 Kg.

AIR RATCHET WRENCH  
RW12A (1/2 " Sq. Drive)



Square Drive	3/8"
Air Inlet	1/4"
Max. Torque	90 FT-LB. (120N-M)
Free Speed	160 r.p.m.
Air Consumption	3.7 cfm
Overall Length	254 mm
Air Hose	3/8"
Net Weight	1.20 Kg

DUST FREE ORBITAL SANDER  
OS-303 / OS-306



Pad Size	5" velcro type	6" velcro type
Free Speed	10,000 r.p.m.	11,000 r.p.m.
Air Inlet	1/4"	1/4"
Hose Size	3/8"	3/8"
Air Consumption	12 cfm	4.75 SCGM
Orbit Diameter	5 mm	6 mm
Net Weight	0.9 Kg.	0.9 Kg.

SAND RAMMER

PNEUMATIC BENCH SAND RAMMER  
BSR1 / FSR1



Blows Per Min.	850	800
Over all Length	530 mm	1258 mm
Length of Stroke	102 mm	152 mm
Air Inlet	3/8" NPT	A 1/2" BSP
Weight	5.7 Kg.	11 Kg.

SCREW DRIVER

AIR SCREW DRIVER  
SD5MA



Screw Capacity	5 - 7 mm
Free Speed	9000 r.p.m.
Max. Torque	25-30 N. m.
Air Consumption	2.0 cfm
Overall Length	190mm
Net Weight	0.83 Kg

AIR SCREW DRIVER  
SD-SR208



Capacity	1/4"
Free Speed	700 Rpm
Overall Length	220 Mm
Max. Torque	45-145 In-lb
Air Consumption	7.5 Cfm
Weight	1.23 Kg

CHIPPING HAMMER

3/16" AIR HYDRAULIC RIVETER  
HRRV105L



Rivet Capacity	For setting blind rivets up to 3/16"(4.8mm)
Traction Power	2,680 lbs (1219 kg)
Tools Stroke	18mm
	2.4mm, 3.2mm,
Nosepieces	4.0mm, 4.8mm
Net Weight	1.5 Kg

PNEUMATIC CHIPPING HAMMER  
CH3



Blows Per Min.	2100
Length of Stroke	76.2
Air Inlet	1.2" BSP
Weight	6.5 Kg.

PNEUMATIC WELD FLUX CHIPPER  
WFC42



Blows Per Minute	4200
Over all Length	257 mm
Length of Stroke	25.4 mm
Air Inlet	1/4" NPT
Weight	2 Kg.

CONCRETE BREAKER

PNEUMATIC CONCRETE BREAKER  
CB117      CB1210



Length	540 mm	740 mm
Impact Rate	1400 bpm	1200bpm
Piston Dia	48 mm	57 mm
Piston Stroke	108 mm	165 mm
Air Inlet	19 mm	19 mm
Air Pressure	6 bar	6 bar
Shank Size	25 X 108 mm	32 X 160 mm
Weight	22 Kg.	37 Kg.

CHISELS FOR PNEUMATIC TOOLS



FOR CONCRETE BREAKERS CHIPPING HAMMERS AND  
WELDFLUX CHIPPER



SPM 6

Suitable for Stirrer purpose



Specifications	No Load	Full Load
Rated Voltage	235V AC/DC	235V AC/DC
Input - watts	2.8W	5.5W
Speed - r.p.m.	625	1200
Drive Roll Dia	14000	9600

SPM 8

Suitable for Circuit Breaker



Specifications	No Load	Full Load
Rated Voltage	220V AC/DC	220V AC/DC
Input - watts	1.2W	2.2W
Speed - r.p.m.	254	450
Drive Roll Dia	4000	2800
Wire feeder speed	–	1

SPM 18

Suitable for Circuit Breaker



Specifications	No Load	Full Load
Rated Voltage	220V AC/DC	220V AC/DC
Current - amps	1.1	2.8
Input - watts	230W	580W
Speed - r.p.m.	15000	9200
Rating - Minutes	–	10

SPM 23

Suitable for Circuit Breaker



Specifications	No Load	Full Load
Rated Voltage	220V AC/DC	220V AC/DC
Current - amps	0.58	1.2
Input - watts	124W	230W
Speed - r.p.m.	18000	9000
Rating-Minutes	–	1

SPM 24

Suitable for Circuit Breaker



Specifications	No Load	Full Load
Rated Voltage	235V AC/DC	235V AC/DC
Current - amps	0.6	1.15
Input - watts	130W	235W
Speed - r.p.m.	2800	1500
Rating - Minutes	–	30

SPM 25

Suitable for Circuit Breaker



Specifications	No Load	Full Load
Rated Voltage	220V AC/DC	220V AC/DC
Current - amps	0.75	3.0
Input - watts	156W	550W
Speed - r.p.m.	15000	5500
Rating - Minutes	–	1

SPM 25G

Suitable for Circuit Breaker



Specifications	No Load	Full Load
Rated Voltage	110V AC/DC	110V AC/DC
Current - amps	1.5	7
Input - watts	175W	650W
Speed - r.p.m.	200	120
Rating - Minutes	–	–

SPM 35

Suitable for Welding machine



Specifications	No Load	Full Load
Rated Voltage	24F/36A V DC	24F/36A V DC
Current - amps	1.2	5
Input - watts	43.2W	180W
Speed - r.p.m.	5000	4600
Rating - Minutes	–	Continuous

## SPM 43



Suitable for Circuit Breaker

Specifications	No Load	Full Load
Rated Voltage	240V AC/DC	240V AC/DC
Current - amps	1.20	4.5
Input - watts	280W	970W
Speed - r.p.m.	16000	8000
Rating - Minutes	–	5

## SPM 63



Suitable for Circuit Breaker

Specifications	No Load	Full Load
Rated Voltage	220V DC	220V DC
Current - amps	0.42	0.7
Input - watts	92W	154W
Speed - r.p.m.	15000	10000
Rating - Minutes	–	5

## PMDC 58 / 59



Suitable for Offset printing machine

Specifications	No Load	Full Load
Rated Voltage	90V DC	90V DC
Current - amps	0.2	1
Input - watts	25W	90W
Speed - r.p.m.	40	38
Rating - Minutes	Continuous	Continuous

## PMG 3



Suitable for Welding wire feeder motor

Specifications	No Load	Full Load
Rated Voltage	24V DC	24V DC
Current - amps	1.1	5.5
Watts input	40W	130W
Speed - r.p.m.	270	230
Drive Load Dia	40 mm	40 mm

(Also available in 12V/24V/36V/42V/110V)

## SPM 58 / 59



Suitable for Offset printing machine

Specifications	No Load	Full Load
Rated Voltage	90V DC	90V DC
Current - amps	0.5	1
Input - watts	45W	90W
Speed - r.p.m.	40	38
Rating - Minutes	–	Continuous

## SPM 68



Suitable for Welding machine

Specifications	No Load	Full Load
Rated Voltage	100F/90A V DC	100F/90A V DC
Current - amps	1.1	3.0 MAX
Input - watts	99W	270W
Speed - r.p.m.	194	184
Rating - Minutes	30	30

## PMG 2



Suitable for Welding wire feeder motor

Specifications	No Load	Full Load
Rated Voltage	42V DC	42V DC
Current - amps	1.1	3.5
Watts input	40W	130W
R.P.M	200	180
Drive Load Dia	40 mm	40 mm

(Also available in 12V/24V/36V/42V/110V)

## PMG 20

Suitable for CO2 Welding machine  
Servo & Voltage stabilizers

Specifications	No Load	Full Load
Rated Voltage	12V DC	12V DC
Current - amps	1.1	4.0
Input - watts	13W	48W
Speed - r.p.m.	48/56	37/43
Rating - Minutes	Continuous	Continuous
Torque	–	32 Kgs-cm

**PMG 26**


Suitable for CO2 Welding machine  
Servo & Voltage stabilizers

Specifications	No Load		Full Load	
Rated Voltage	12V DC		12V DC	
Current - amps	1.1		4.0	
Input - watts	13W		48W	
Speed - r.p.m.	48/56		37/43	
Rating - Minutes	Continuous		Continuous	
Torque	–		32 Kgs-cm	

**UM 15**


Suitable for Circuit Breaker

Specifications	No Load		Full Load	
	220V	110V	220V	110V
Current - amps	0.65	1.30	1.6	3.2
Input - watts	120W	120W	430W	430W
Speed - r.p.m.	20000	20000	7000	7000
Rating - Minutes	–	–	Short Duty	Short Duty
Torque	–	–	2.5kg-cm	2.5kg-cm

**UMG 5**


Suitable for Switch Gears

Specifications	No Load		Full Load	
Rated Voltage	220/110V DC		220/110V DC	
Current - amps	0.4/0.5		0.7/1.0	
Input - watts	90/60W		150W	
Speed - r.p.m.	420/260		320/170	
Rating - Minutes	1		1	

**UMG 14**


Suitable for Circuit Breaker

Specifications	No Load		Full Load	
	220V DC	110V	220V DC	110V
Current - amps	0.6	1.2	1.2	2.4
Input - watts	–	–	18W	18W
Speed - r.p.m.	19	19	17	17

**UM 4B**


Suitable for Circuit Breaker

Specifications	No Load		Full Load	
Rated Voltage	220V AC/DC		220V AC/DC	
Current - amps	0.8		1.5 / 1.7	
Input - watts	100W		700W	
Speed - r.p.m.	27000		8000	
Rating - Minutes	3		3	

**UM 26**


Suitable for Circuit Breaker

Specifications	No Load		Full Load	
Rated Voltage	220V		220V	
Current - amps	0.8		1.1	
Input - watts	100W		200W	
Speed - r.p.m.	29000		20000	
Rating - Minutes	1min.		1 min.	

**UMG 27**


Suitable for Switch Gears

Specifications	No Load		Full Load	
Rated Voltage	220/110V AC/DC		220/110V AC/DC	
Current - amps	0.58/0.64		1.3/1.6	
Input - watts	125/70W		290/175W	
Speed - r.p.m.	640/430		365/200	
Rating - Minutes	1		1	

**UMG 31/32 (for clockwise/anti clockwise)**


Suitable for Circuit Breaker

Specifications	No Load		Full Load	
Rated Voltage	230V AC/DC		230V AC/DC	
Current - amps	1.35		2.7	
Input - watts	150W		300W	
Speed - r.p.m.	700		300	

## GASOLINE WATER PUMP



Model	WP30 3"
Engine Power	6.5HP
Connection Dia.	76mm
Suction	7M
Total Head	28M
Power Speed	3600 r.p.m.

## CHAIN SAW



Model	RS58
Type	2 stroke, single cylinder
Displacement	50.8 CC
Max. Output	2.2 kwx 900 r/min
Chain	.325 x .058 (pitch x gauge)
Bar length	20"/ 22 " / 24"
Weight	5.8 kg

## CHAIN SAW



Model	CS58
Type	2 stroke, single cylinder
Displacement	50.8 CC
Max. Output	2.2 kwx 900 r/min
Chain	.325 x .058 (pitch x gauge)
Bar length	20"/ 22 " / 24"
Weight	5.8 kg

## EARTH AUGER SINGLE MAN & DOUBLE MAN



Model	ED52D	ED63D
Engine	1E44F	1E48F
Engine Power	1.45KW	2.2KW,
Displacement	52CC	63CC
Power Speed	6500 r.p.m.	6500 r.p.m.

## THERMAL FOGGER



Model	RF01 MINI	RF02 AUTO
Chemical Tank	2 ltr	6 ltr (S.S.)
Fuel Tank	Butane Gas	1.2 ltr (S.S.)
Fogging Particle	5-30 Microns	10-50 Microns
Power	-	18.5 kw
Fuel Consumption	-	1.5 ltr/hr
Diesel Consumption	-	25 ltr/hr
Dry Weight	1.4 kg	9 kgs. per unit

## THERMAL FOGGER



Model	RF03 AUTO
Chemical Tank	7 ltr x 2
Fuel Tank	2.0 ltr
Starting Device	Automatic & Manual Start
Ignition Power	12V Rechargeable Battery
Fuel Consumption	1.2 ltr/hr
Fuel Used	Pure Petrol
Spraying Amount	80-120 Litre/Hour
Dry Weight	15 kgs. approx

## GASOLINE BROUSH CUTTER



Model	BC52 (2 STROKE)
Engine	1E44F 2 Stoke,
Engine Power	1.45 KW
Displacement	51.7CC
Power Speed	6500 r.p.m.

## DISINFECTION FOGGING SANITIZING MACHINE



Model	BC43SP / BC38BP (4 STROKE)
Engine	G35 4 Stoke
Engine Power	0.85 KW
Displacement	35.8CC
Power Speed	6500 r.p.m.

[illegible]





## Sales Network :

Ahmedabad

Bangalore

Baroda

Bhopal

Bhilai

Chennai

Coimbatore

Cuttack

Delhi

Gurgaon

Guwahati

Indore

Jaipur

Jamshedpur

Kolkata

Ludhiana

Mumbai

Nagpur

Patna

Pune

Raipur

Secunderabad

Siliguri

Thiruvananthapuram

Trichy

Vishakhapatnam



follow us :       

Note : \*110V can be made available on select models for MOQ

\* Machines with Deadman switches are available in request for certain models.

\* For pneumatic tools - Air pressure required is 90 Bars.

\* Oil lubrication is must for all the tools before starting the operation.



Due to continuous R & D, product supplied may differ the data contained herein. The catalogue supercedes all earlier catalogues.

# Ralli Wolf

Power Tools | Welding Equipment | Air Tools | Motors | Farm Equipment

[www.ralliwolf.com](http://www.ralliwolf.com)

## Ralli Wolf Industries Ltd.

An ISO 9001 : 2015 certified Organisation

Regd Office : 4 Fairlie Place, Kolkata – 700 001, India,

P : +91 33 226 27341 E : [info@ralliwolf.com](mailto:info@ralliwolf.com)

Works : G-104, MIDC Area, Ahmednagar - 414 111, Maharashtra, India,

P : +91 24127 79887 E : [works@ralliwolf.com](mailto:works@ralliwolf.com)

Customer Care : P : +91 81000 80353 | E : [customercare@ralliwolf.com](mailto:customercare@ralliwolf.com)